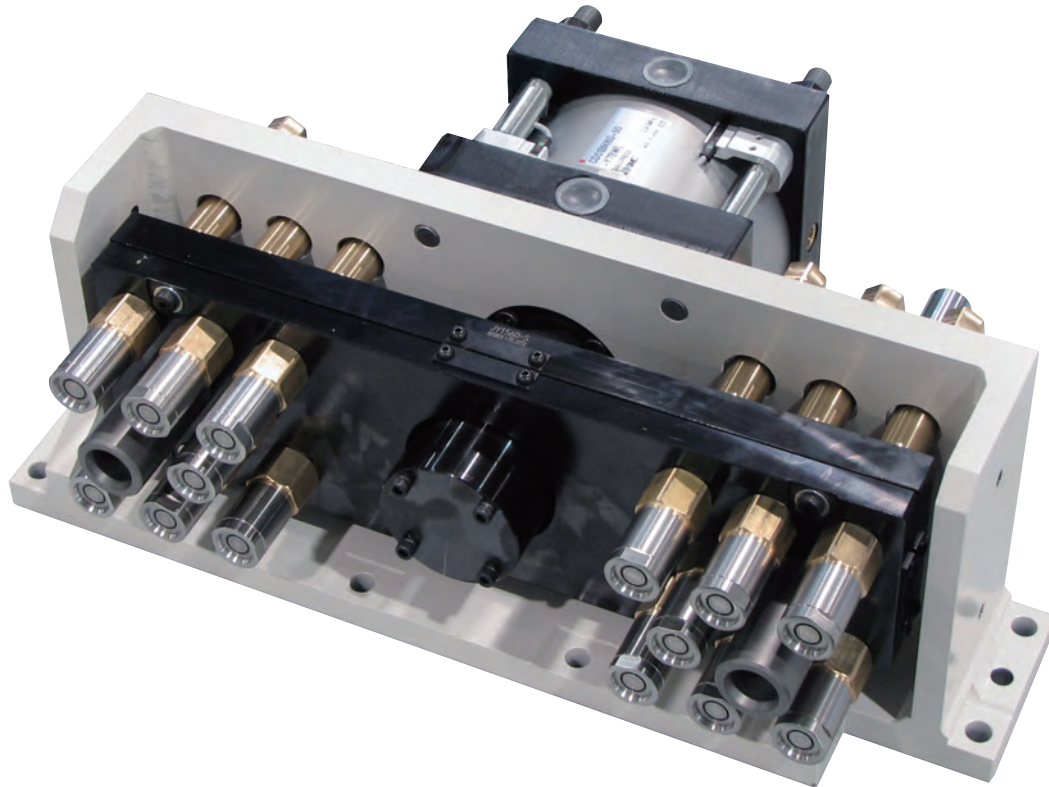


Automation of connection pipe for controlling the die temperature is now available!

Auto coupler unit



- Automation of connection pipe for controlling the die temperature is now available.

Die changeover of the IMM is completely automated with the combination of auto clamp system.
Changeover time is minimized.

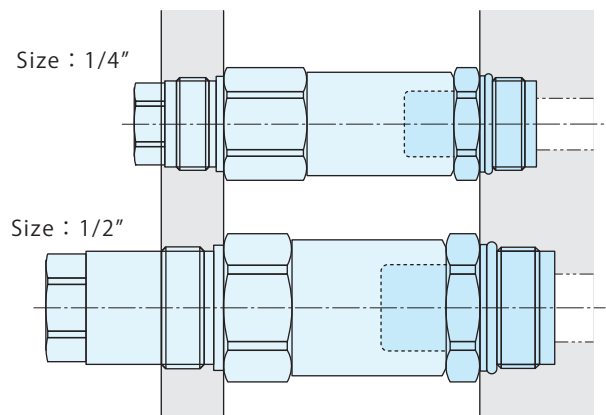
- An appropriate one according to volumetric flow can be found from a variety of size. (model JL)

Wide range of body size.

- 1/4"
- 3/8"
- 1/2"
- 3/4"
- 1"

- Combination with varied sizes possible.

Combination of size difference and ability to fit in small spaces is possible.



- The most appropriate coupler is selected according to the volumetric flow. (model JL)

There are most appropriate material for each flow.

- Water, air, and general working fluid (max.80°C) : Stainless steel, bras and nitrile rubber
- Warm water, air, and general working fluid (max.120°C) : Stainless steel, bras and fluoro rubber
- General working fluid (max.80°C) : Steel and nitrile rubber

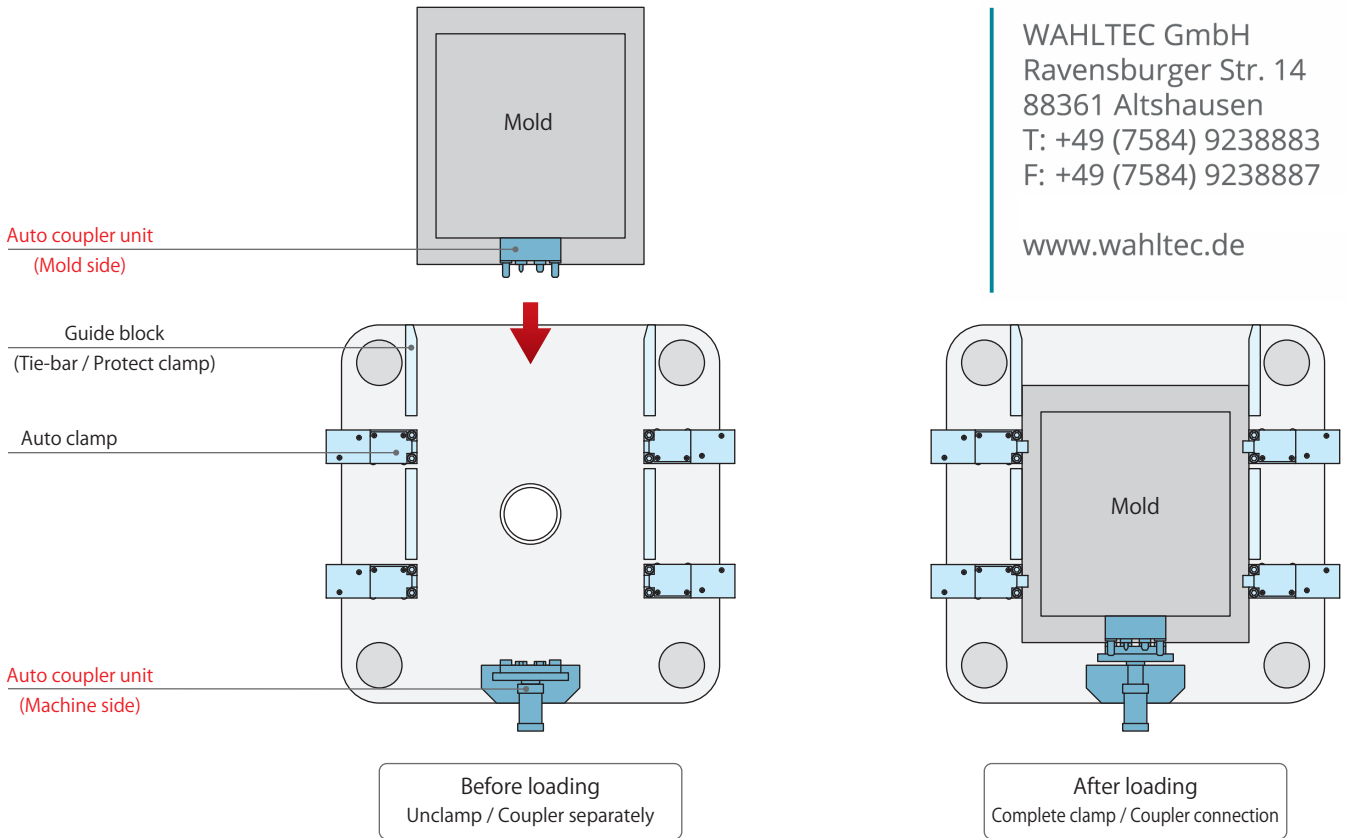
The most appropriate auto coupler unit is designed and manufactured according to customer's molding machine and the specification of fixture.

● **Horizontal injection mold machine : Vertical loading**



WAHLTEC GmbH
Ravensburger Str. 14
88361 Altshausen
T: +49 (7584) 9238883
F: +49 (7584) 9238887

www.wahltec.de



● **Horizontal injection mold machine : Horizontal loading**

